



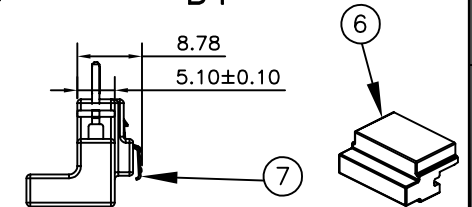
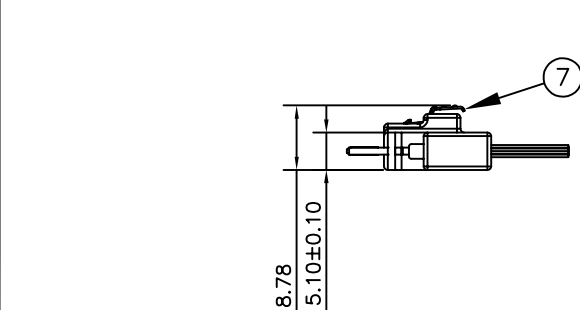
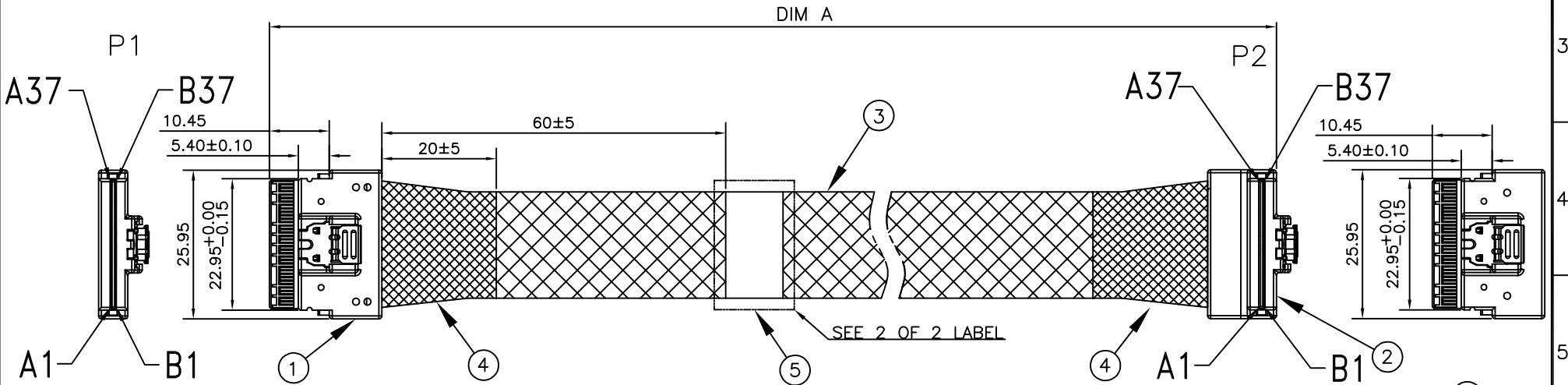
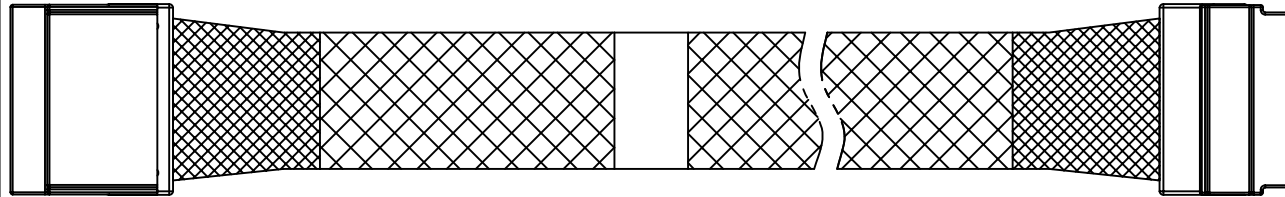
NOTES:

1. ALL CABLE 100% OPEN, SHORT, MISS WIRE & TRANSIENT FAULT TEST.
2. CONDUCTIVE RESISTANCE: 2Ω MAX.
3. INSULATION RESISTANCE: 10M Ω MIN WITH 200Vac AT 10ms.
4. HIGH FREQUENCY TEST MUST COMPLY WITH SAS 4.0 REQUIREMENT.
CONNECTOR IMPEDANCE: 100Ω ±15Ω
CABLE IMPEDANCE: 100Ω ±10Ω
5. ALL MATERIAL AND PROCESS MUST MEET THE REQUIREMENT OF RoHS2.0
6. PRODUCT SPEC. REFER TO PS-728XX-02XXX-XXX
7. PDR NUMBER:

100Ω 32AWG:APD1090317

8. PART NUMBER:

728XX-XX XXX - XXX
 SERIES CODE J CUSTOMER CODE
 14:8i ST/RA 100Ω 001:ACES
 PORT NUMBER SERIAL NUMBER
 02:2PORT 001

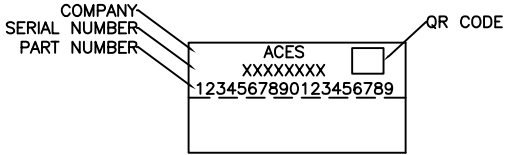
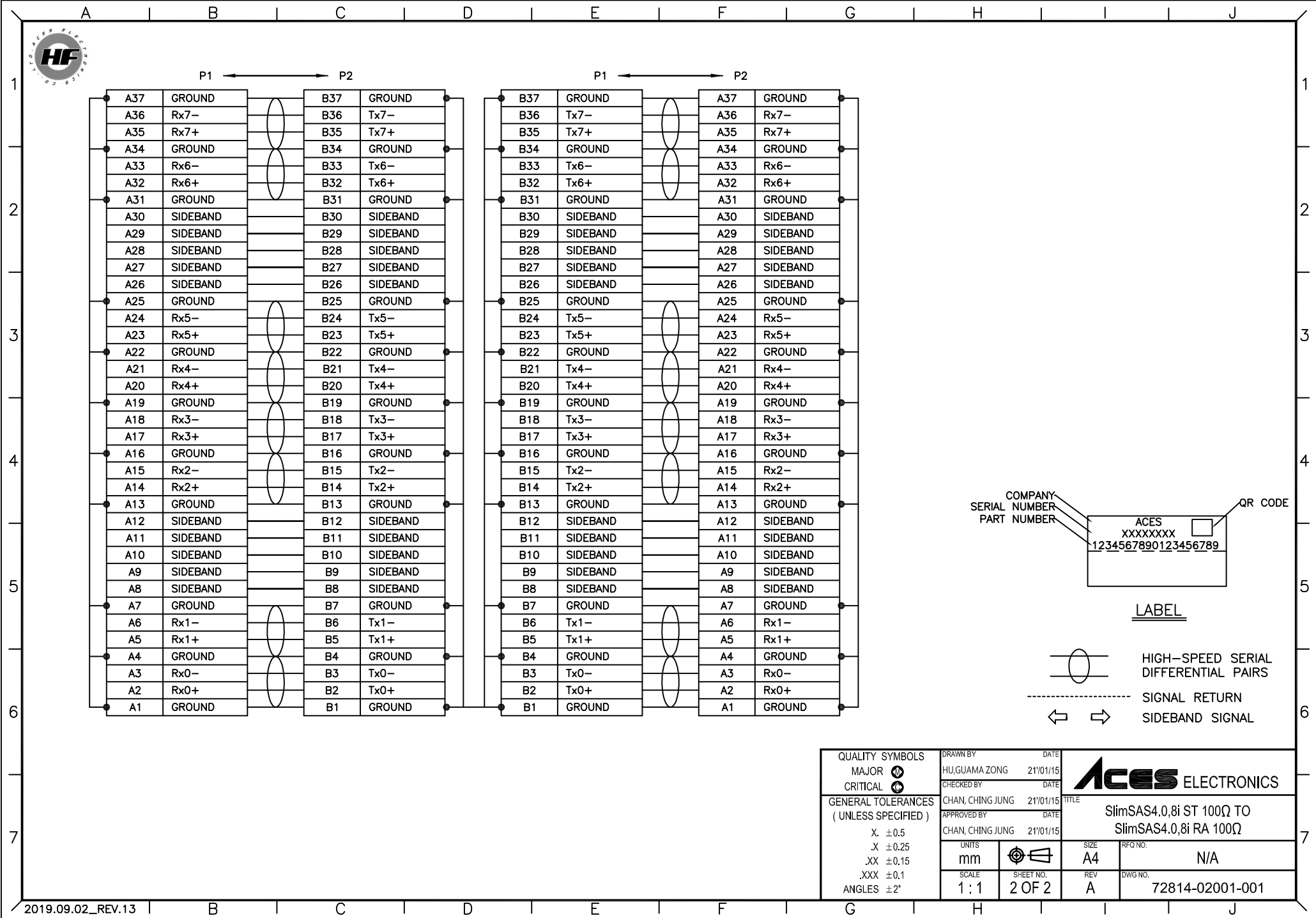


ITEM	DESCRIPTION	Q'TY	UNIT
	Slimline BI STRAIGHT 100Ω & Slimline BI RIGHT ANGLE 100Ω		
1	SLIMLINE BI STRAIGHT 100Ω.	1	PCS
2	SLIMLINE BI RIGHT ANGLE 100Ω.	1	PCS
3	EXPANDO TUBE.	A/R	MM
4	ACETATE TAPE COLOR: BLACK.	A/R	MM
5	LABEL.	A/R	MM
6	DUST COVER, PE, COLOR: WHITE.	2	PCS
7	LATCH.	2	PCS

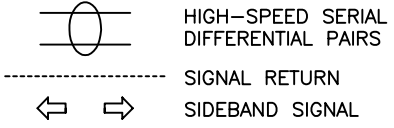
QUALITY SYMBOLS		DRAWN BY		DATE	
MAJOR	⊕	HU, GUAMA ZONG	21/01/15		
CRITICAL	⊗	CHECKED BY	DATE		
GENERAL TOLERANCES (UNLESS SPECIFIED)		CHAN, CHING JUNG	21/01/15		
X	±0.5	APPROVED BY	DATE		
.X	±0.25	CHAN, CHING JUNG	21/01/15		
.XX	±0.15				
.XXX	±0.1				
ANGLES ±2°					

		TITLE	
		SlimSAS4.0,8i ST 100Ω TO SlimSAS4.0,8i RA 100Ω	
UNITS	SIZE	RFQ NO.	
mm	A4		N/A
SCALE	SHEET NO.	REV	DWG NO.
1:1	1 OF 2	A	72814-02001-001

72814-02001-001	PART NUMBER
1000±15	DIM A



LABEL



QUALITY SYMBOLS MAJOR CRITICAL GENERAL TOLERANCES (UNLESS SPECIFIED) X. ±0.5 .X ±0.25 .XX ±0.15 .XXX ±0.1 ANGLES ±2°	DRAWN BY HU, GUAMA ZONG DATE 21/01/15	 Acas ELECTRONICS TITLE SlimSAS4.0,8i ST 100Ω TO SlimSAS4.0,8i RA 100Ω
	CHECKED BY CHAN, CHING JUNG DATE 21/01/15	
APPROVED BY CHAN, CHING JUNG DATE 21/01/15	UNITS mm	SIZE A4
SCALE 1 : 1	SHEET NO. 2 OF 2	REV A
		DWG NO. 72814-02001-001